

Application Note 02

Advanced SMTP setup

A regular SMTP setup may not work if the SMTP server cannot be directly addressed. The following two methods provide an alternative, when the SMTP server cannot be contacted.

In this section:

Creating a Microsoft Exchange Connector	1
Connecting to Gmail	7

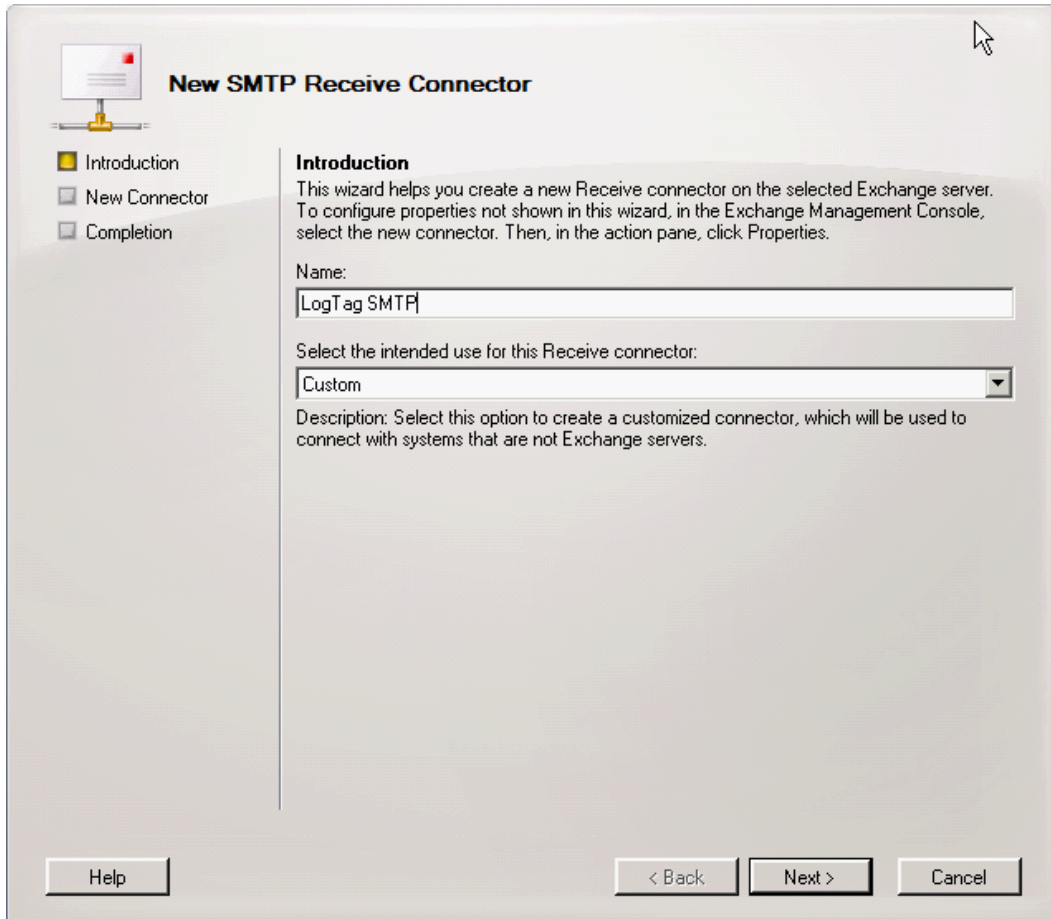
Creating a Microsoft Exchange Connector

In its default settings Microsoft Exchange needs a dedicated SMTP connector or a correctly set up virtual SMTP server to relay any application server's SMTP request to the outside world. This is not a restriction of LogTag[®] Analyzer, but of the settings in the Exchange server and affects any application sending automated e-mails via Exchange (other examples would be CRM software sending automated e-mails or a photocopier sending e-mail for scans).

Depending on your specific IT network setup this may already have been done in your organisation.

The basic steps to implement are as follows:

1. In the Exchange Management Console, add a new receive connector in the **Receive Connectors** tab of the **Hub transport** node.



The screenshot shows the 'New SMTP Receive Connector' wizard. The title bar reads 'New SMTP Receive Connector'. On the left, there is a navigation pane with three steps: 'Introduction' (selected with a yellow square), 'New Connector' (unchecked), and 'Completion' (unchecked). The main area contains an 'Introduction' section with the following text: 'This wizard helps you create a new Receive connector on the selected Exchange server. To configure properties not shown in this wizard, in the Exchange Management Console, select the new connector. Then, in the action pane, click Properties.' Below this, there is a 'Name:' label followed by a text box containing 'LogTag SMTP'. Underneath is a label 'Select the intended use for this Receive connector:' followed by a dropdown menu showing 'Custom'. A description below the dropdown reads: 'Description: Select this option to create a customized connector, which will be used to connect with systems that are not Exchange servers.' At the bottom of the wizard, there are three buttons: 'Help', '< Back', and 'Next >', and a 'Cancel' button.

Name it and click next.

2. In the Local Network settings screen leave the IP addresses as listed. Enter the FQDN for the HELO/EHLO request.

The screenshot shows the 'New SMTP Receive Connector' wizard in the Exchange Management Console. The 'Local Network settings' step is active, showing a table of local IP addresses and a text box for the FQDN.

New SMTP Receive Connector

- Introduction
- Local Network settings
- Remote Network settings
- New Connector
- Completion

Local Network settings

Use these local IP addresses to receive mail:

+ Add... Edit... X

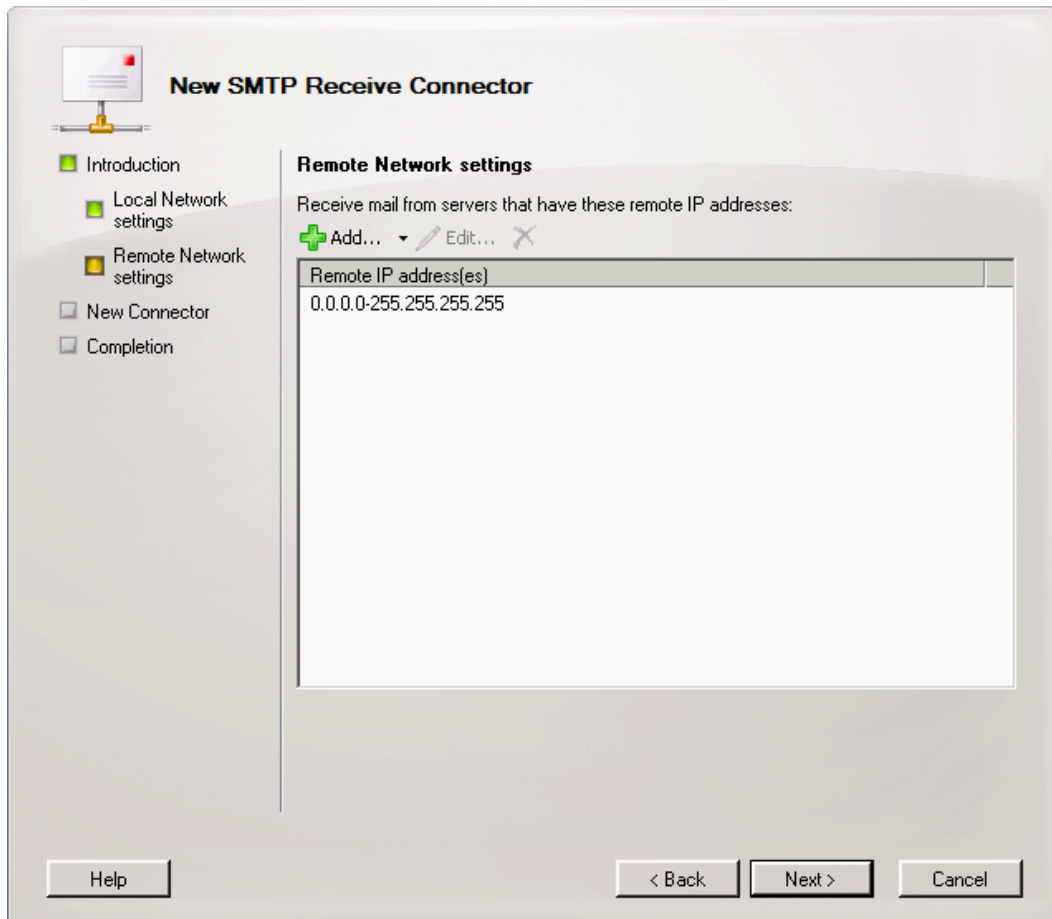
Local IP address(es)	Port
(All available IPv4 addresses)	25

Specify the FQDN this connector will provide in response to HELO or EHLO:

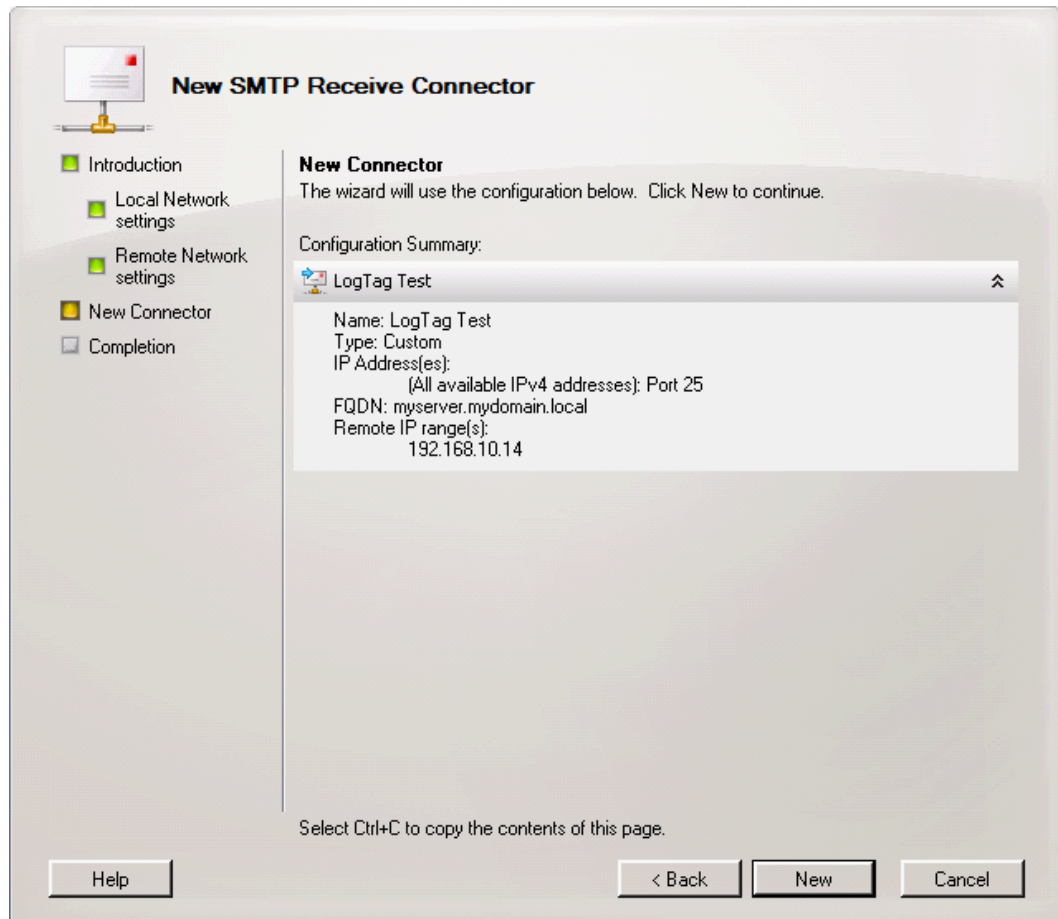
myserver.mydomain.local
(Example: mail.contoso.com)

Help < Back Next > Cancel

3. In the Remote Network settings screen add the IP addresses for which the connector will be used. This can be a list of single IP addresses, or an address range. If you do not wish to keep the default setting delete it and add your own setting.

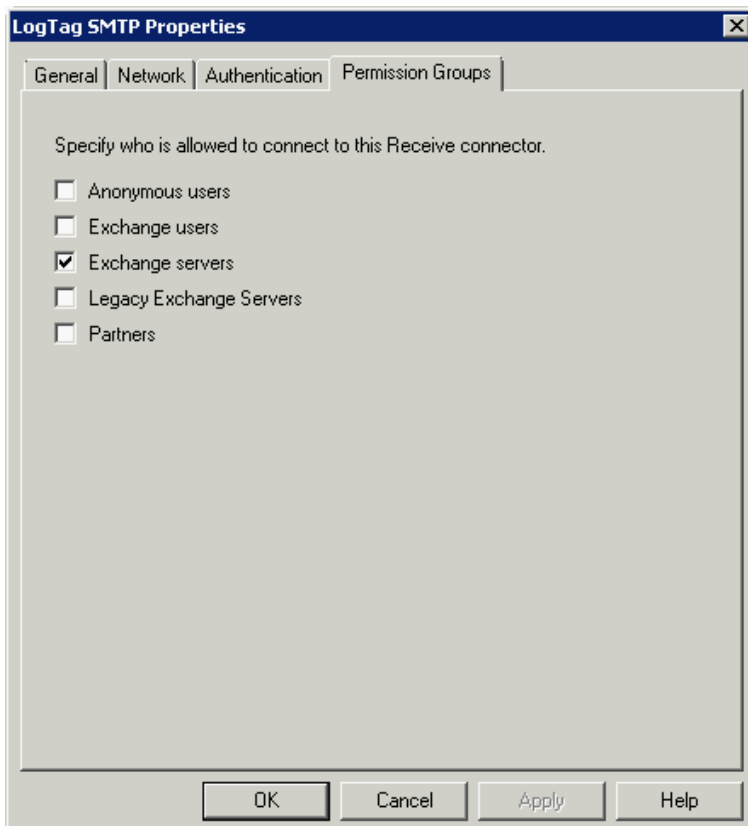
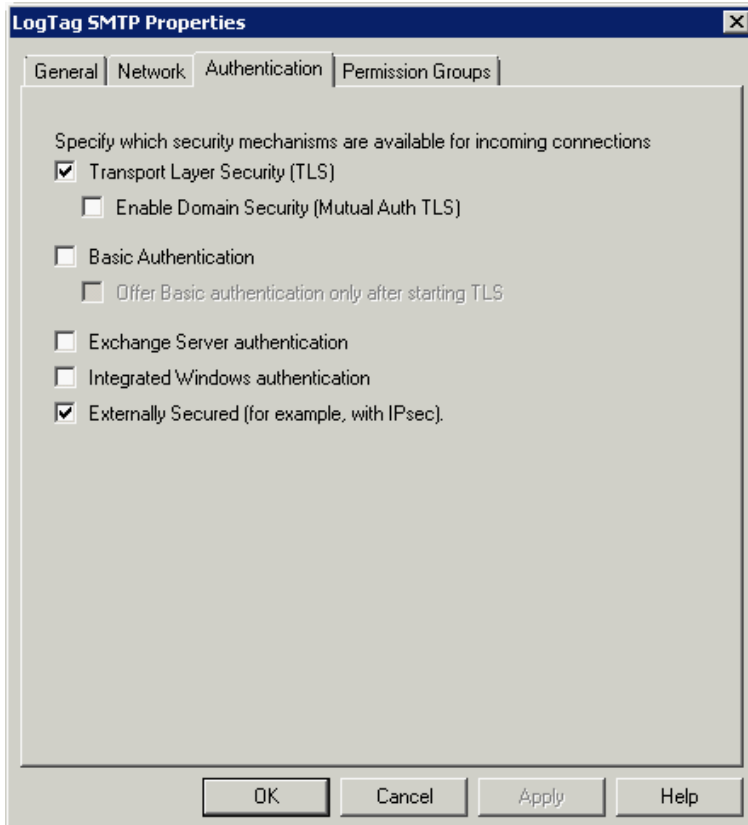


4. Check the summary page, make any amendments if required and click **New**.



Confirm the successful execution of the shell script by clicking **Finish**

The only remaining step is to set Authentication and Permissions for the receive connector.



Please enter the parameters as required for the security settings of your server.

Once you have made all the correct settings it is advisable to re-start the Microsoft Exchange Transport Service from the Services snap-in.

Often when using a Small Business Server e-mail is not hosted on the server but via a smart host, i.e. your ISP. In this case it may be easier to use the SMTP settings for this ISP, rather than changing the settings on your Exchange Server. You can also use a Gmail account and connect through the Gmail SMTP server with the Gmail specific SSL and port settings, however it will highly depend on your organisation's internet and security policies if you are allowed/able to connect to the required ports.

Connecting to Gmail

You can use Google's SMTP server to send automated e-mail through your Gmail account. This requires special settings, which are slightly different than typically found with other ISP's.

- Enter **smtp.gmail.com** as the SMTP server
- The SMTP connection must be made over a secure connection. Check that SSL is enabled
- In the Authentication section select the **User name and password** check box and enter your Gmail account's user name (your full email address) and password in the text entry fields
- In **Advanced Settings** enter 465 in the Port number field. Please ensure this port is open in your firewall.

Complete the remaining entries in the SMTP section as you would for all other ISP's.

Note that Gmail's SMTP server replaces the email sender address with the Gmail account name used to log in. This is a feature of Gmail's SMTP server and cannot be controlled by LogTag[®] Analyzer's SMTP settings. You can override this account setting by entering a different email address in **Send mail as**, however please note this will also affect all other email sent from this account.

Note Google places certain restrictions on the use of its SMTP server and may block your account if you do not adhere to these restrictions. For details on these restrictions please see Google's SMTP relay policy.

Lately Google has been trying to enforce the new, more secure authentication method OAuth 2.0. This is not supported by LogTag Analyzer. If you wish to use Google's SMTP server you need to enable **Access for less secure apps** on your account page at <https://www.google.com/settings/security/lesssecureapps>.